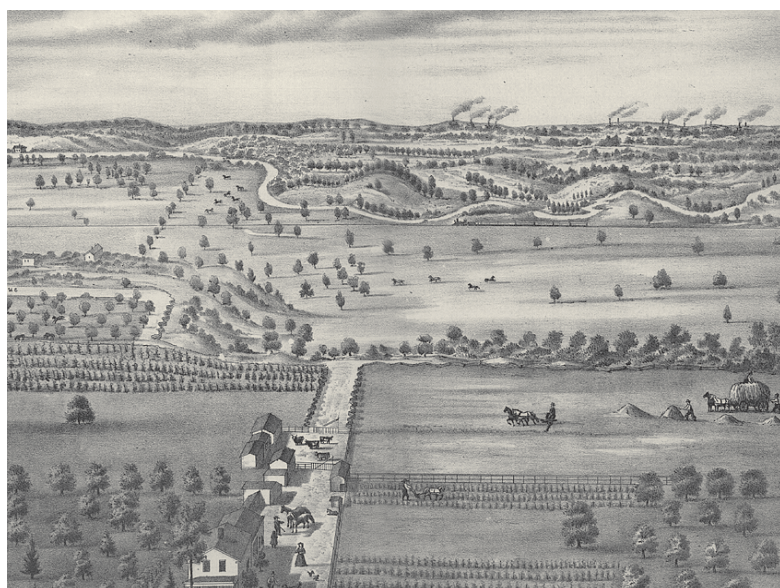


Industry Changes the Environment

By the mid-1870s, new ideas and technology were well on the way to changing almost every aspect of American life. The location of Cleveland, Ohio, on the shores of Lake Erie, gave the city access to raw materials and made it ripe for industrialization. What no one foresaw were the undesirable side effects of rapid development and technological progress.

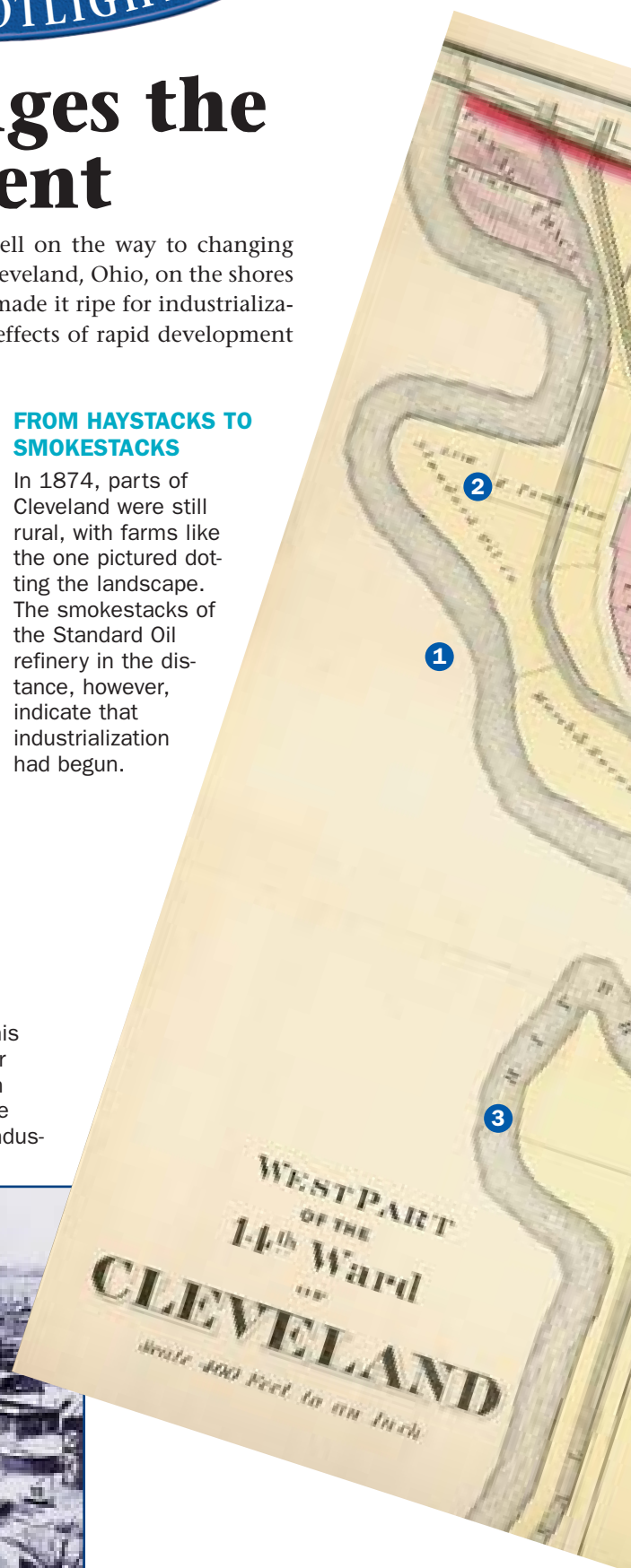


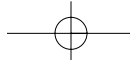
1 FROM HAYSTACKS TO SMOKESTACKS

In 1874, parts of Cleveland were still rural, with farms like the one pictured dotting the landscape. The smokestacks of the Standard Oil refinery in the distance, however, indicate that industrialization had begun.

2 REFINING THE LANDSCAPE

Industries like the Standard Oil refinery shown in this 1889 photo soon became a source of prosperity for both Cleveland and the entire country. The pollution they belched into the atmosphere, however, was the beginning of an ongoing problem: how to balance industrial production and environmental concerns.





3 A RIVER OF FIRE

Industrial pollution would affect not only the air but also the water. Refineries and steel mills discharged so much oil into the Cuyahoga River that major fires broke out on the water in 1936, 1952, and 1969. The 1952 blaze, pictured above, destroyed three tugboats, three buildings, and the ship-repair yards. In the decade following the 1969 fire, changes in the way industrial plants operated, along with the construction of wastewater treatment plants, helped restore the quality of the water.

THINKING CRITICALLY

- Analyzing Patterns** Locate the Standard Oil Company on the map of Cleveland. What can you conclude about where industry was located as compared with the location of residential neighborhoods?
- Creating a Thematic Map** Pose a historical question about the relationship between industry and areas of the Midwest. For example, what types of industry developed near Chicago and why? Then research and create a map that answers your question.

 **SEE SKILLBUILDER HANDBOOK, PAGE R32.**



RESEARCH LINKS

CLASSZONE.COM